

GNU/Linux, un mondo da scoprire



Fabio Fusili – Cristina Passera
BgLUG – Bergamo Linux Users Group

Linux Day @ Bergamo, 27 ottobre 2018
Università di Bergamo, Dalmine

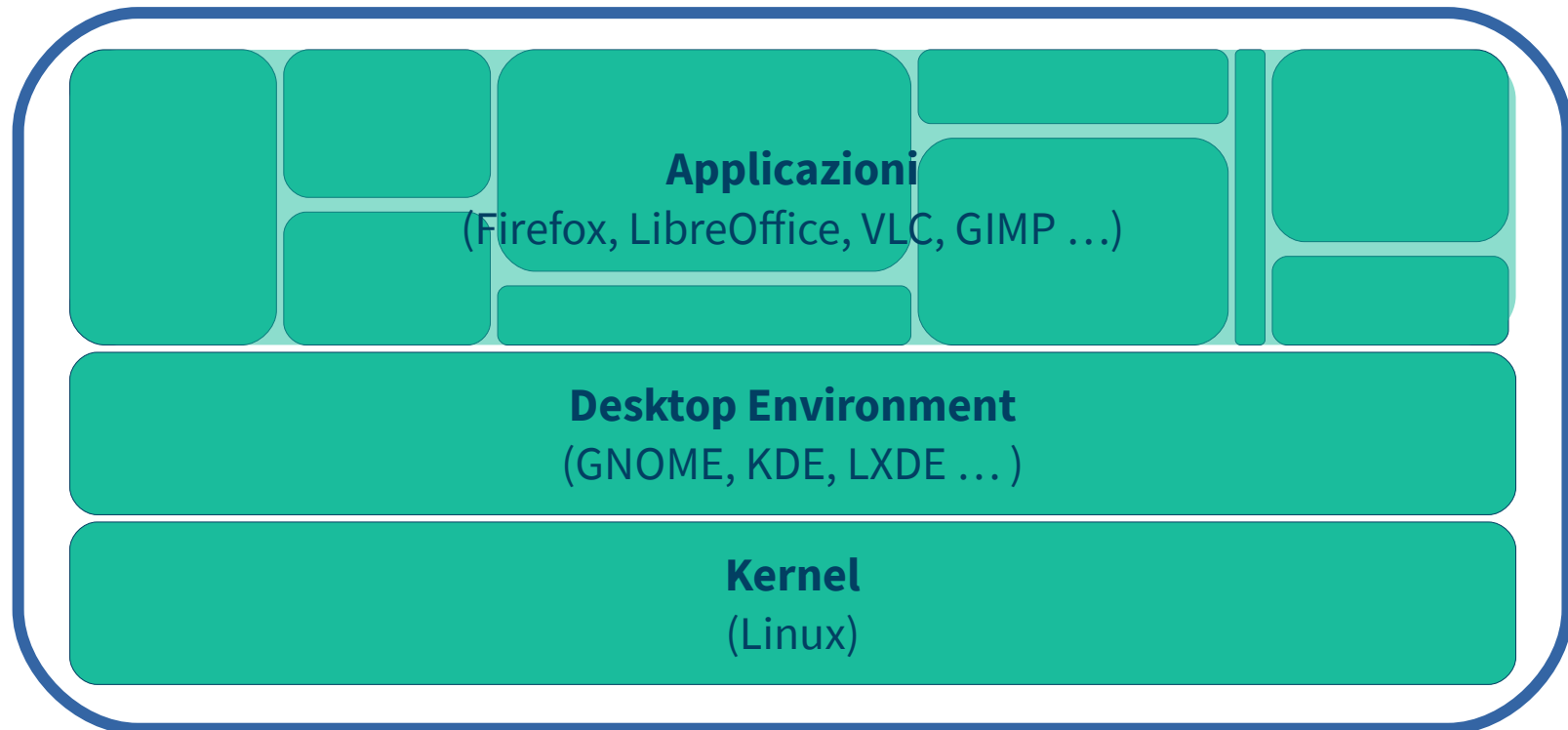
Elementi di un PC



Cosa è GNU/Linux - 1

Distribuzione

(Ubuntu, Fedora, Sabayon, ArchLinux, Debian, OpenSUSE ...)

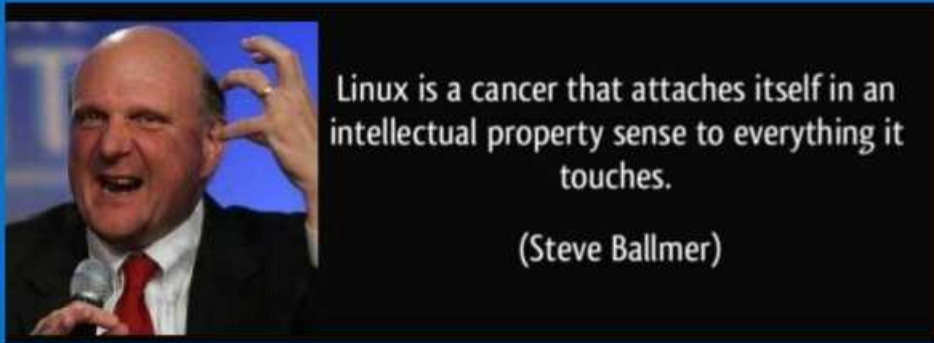




Cosa ne pensano?

Microsoft

Microsoft 2001



Linux è un cancro che aggredisce il senso della proprietà intellettuale di ogni cosa che tocca ”

2001 - Steve Ballmer (CEO Microsoft)

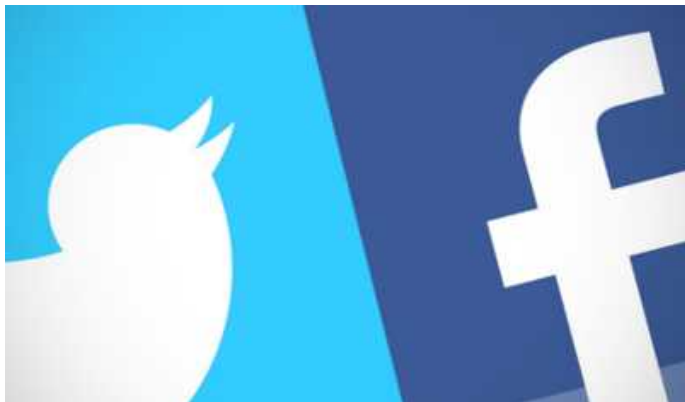
“ Microsoft ♥ Linux ”

2016 - Satya Nadella (CEO Microsoft)

Microsoft ♥ OpenSource



Altre persone più serie...



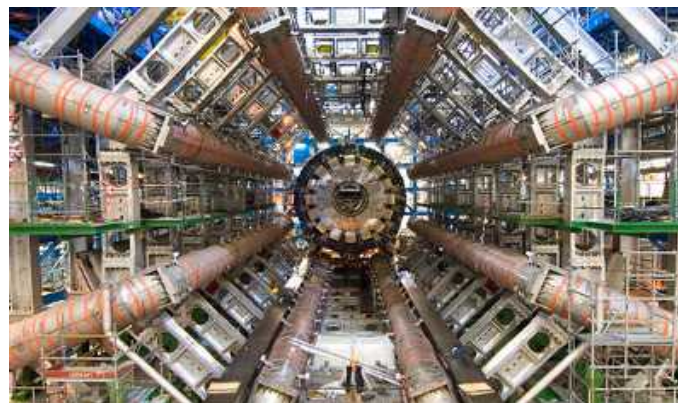
Social e Cloud: Facebook, Twitter,
Dropbox



100% dei primi 500
supercomputer mondiali



Aziende: Google, Toyota, Amazon,
Microsoft, Borse valori (NYSE, Londra)



Istituti scientifici: CERN di Ginevra,
MIT di Boston, NASA

Super Computer



Summit (OLCF-4)

CPU: 202752 Power 9

RAM: 10 PB

Disco: 250 PB

Mini super Computer



Principi fondamentali



Software proprietario e libero/opensource

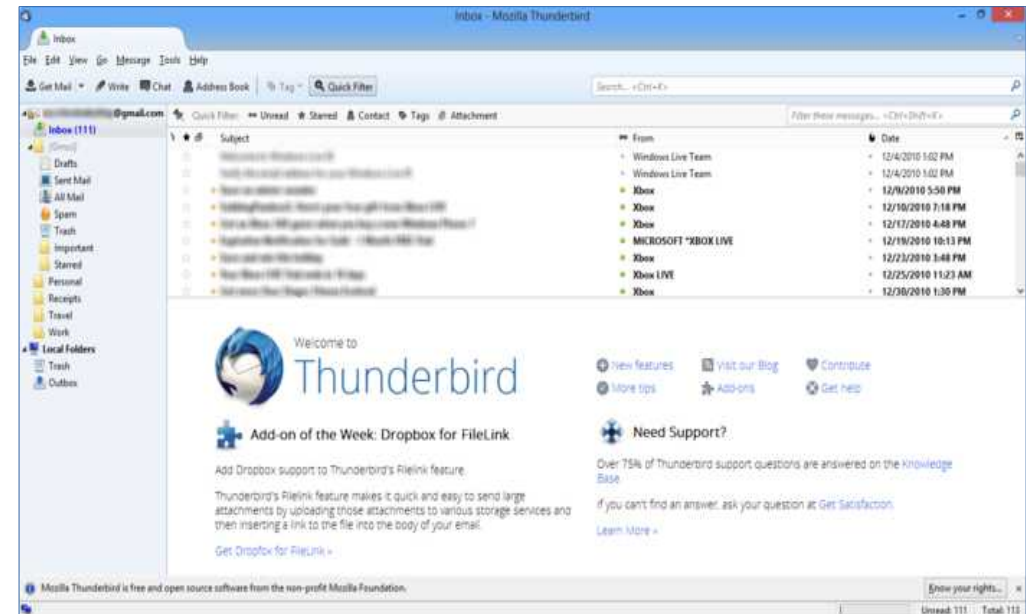
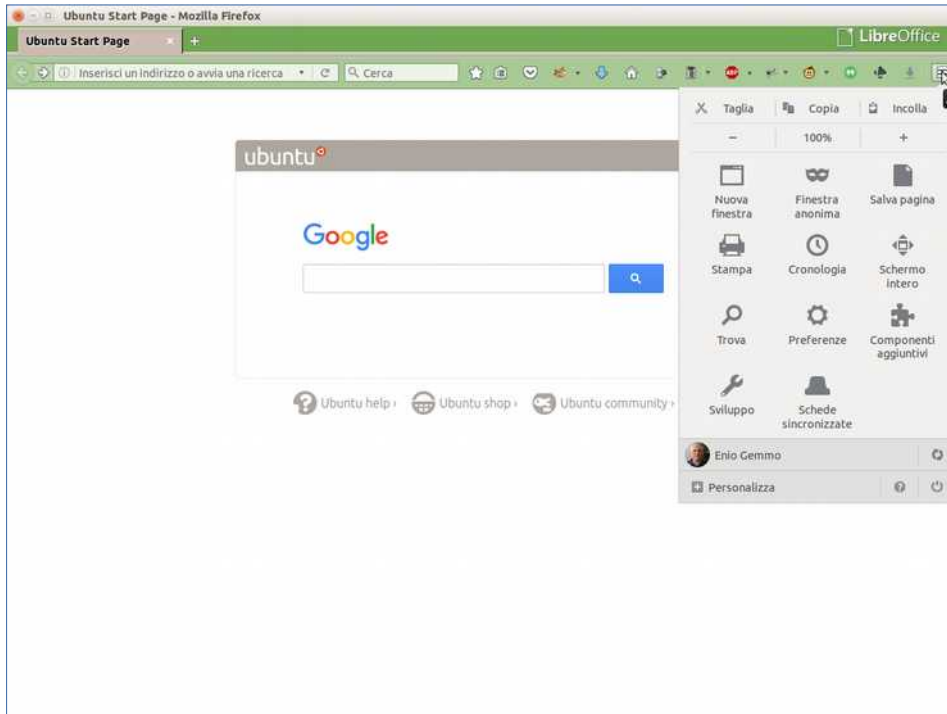
Proprietario

- Appartiene ad un'azienda
- Spesso a pagamento (molto)
- Feature decise dall'azienda
- Uso limitato
- *Vendor lock-in*

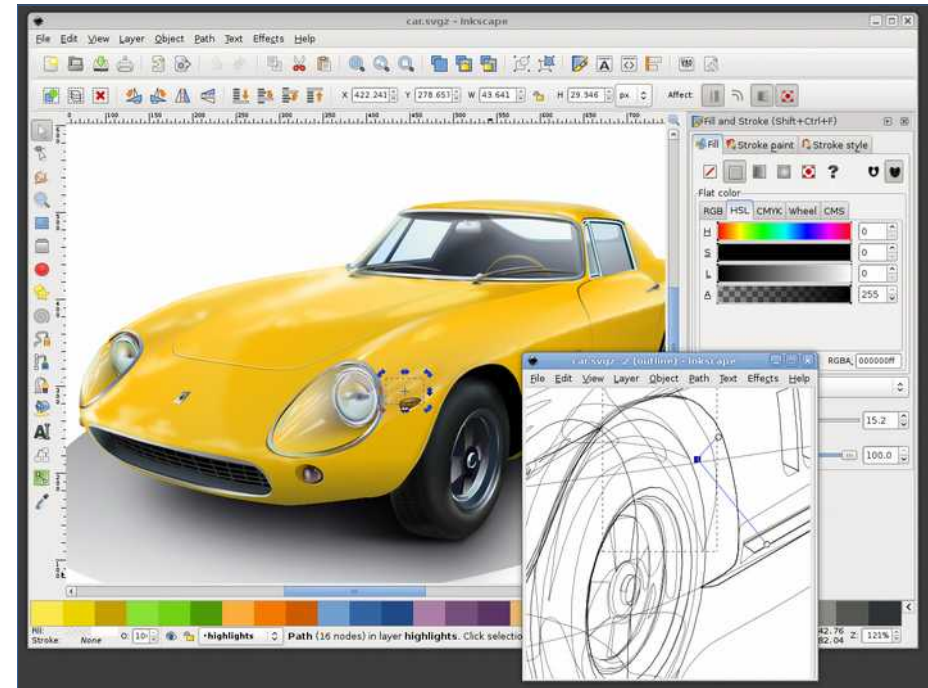
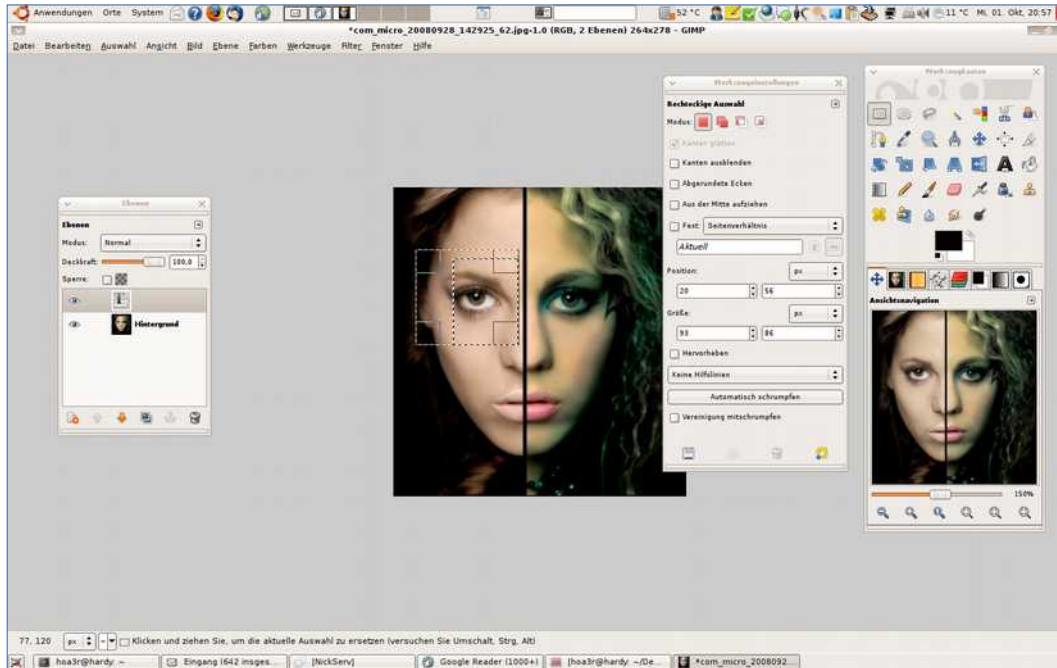
Libero/open source

- Appartiene a una community
- Spesso scaricabile gratuitamente
- Feature decise dagli utenti
- Uso libero, anche per fini commerciali
- Aderenza a standard internazionali

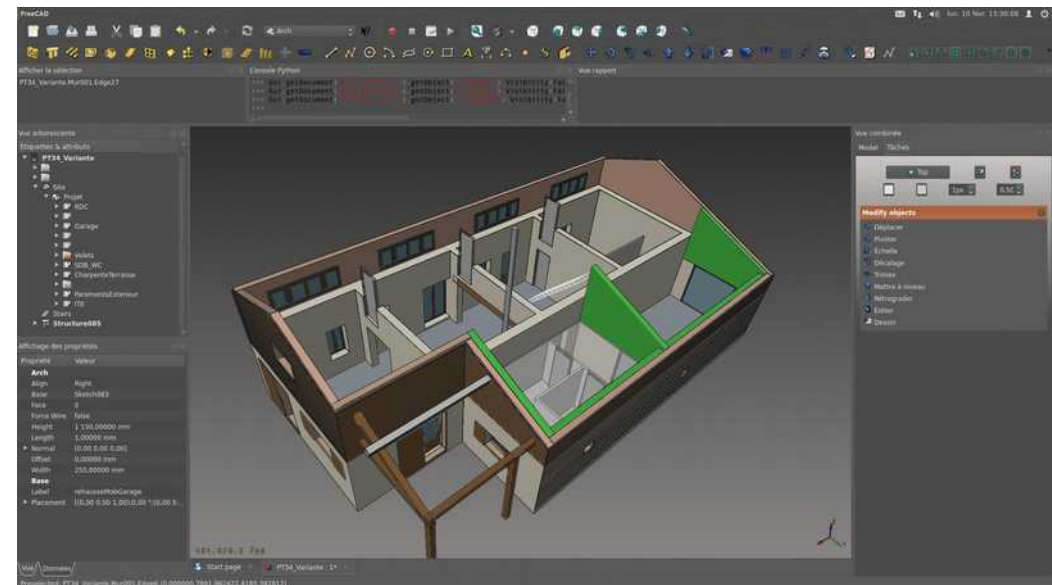
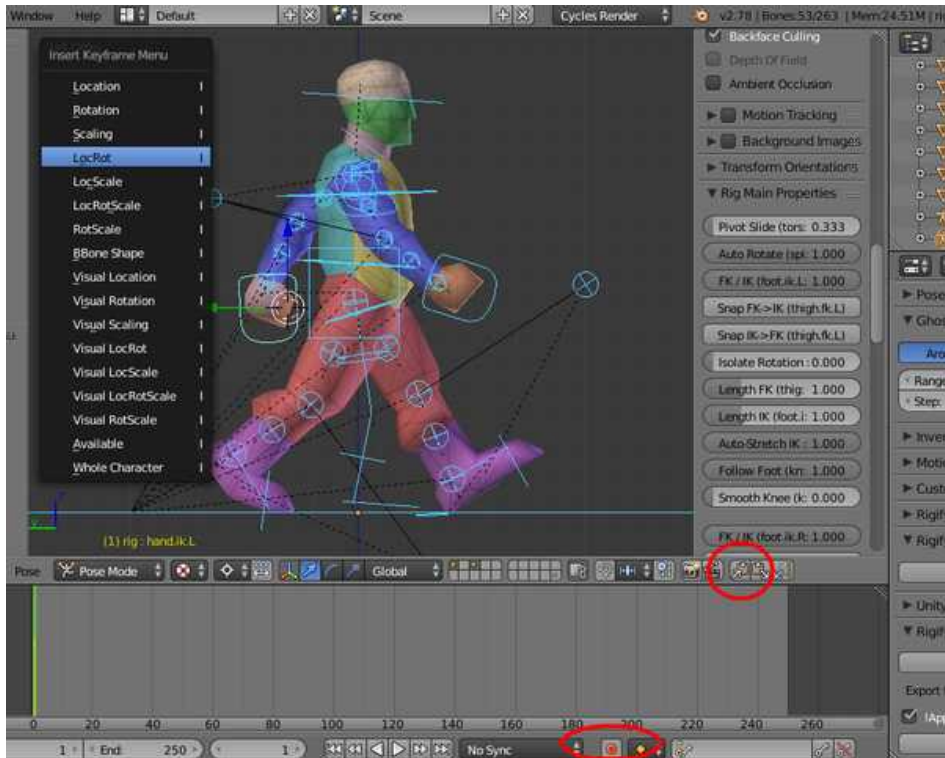
Firefox e Thunderbird



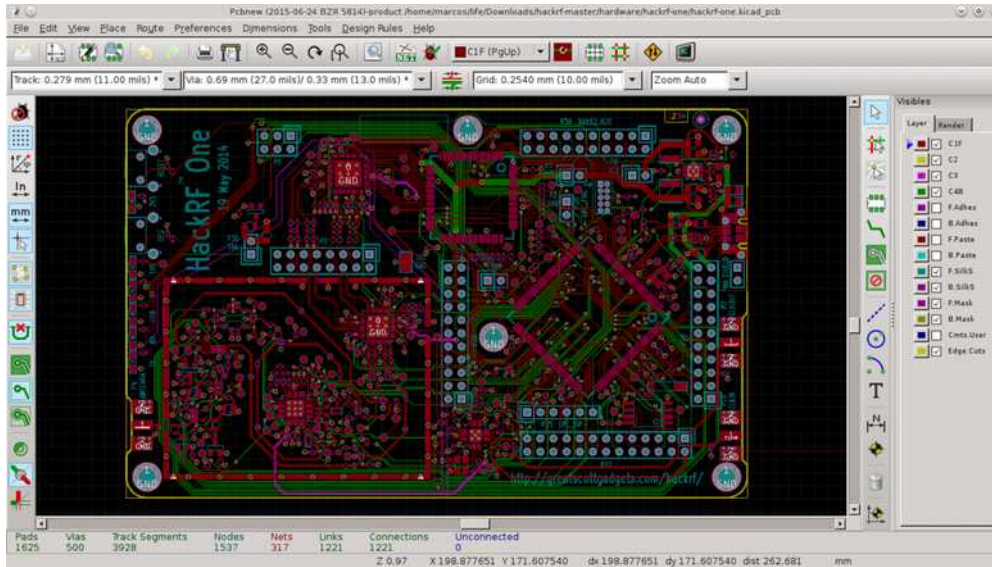
GIMP e Inkscape



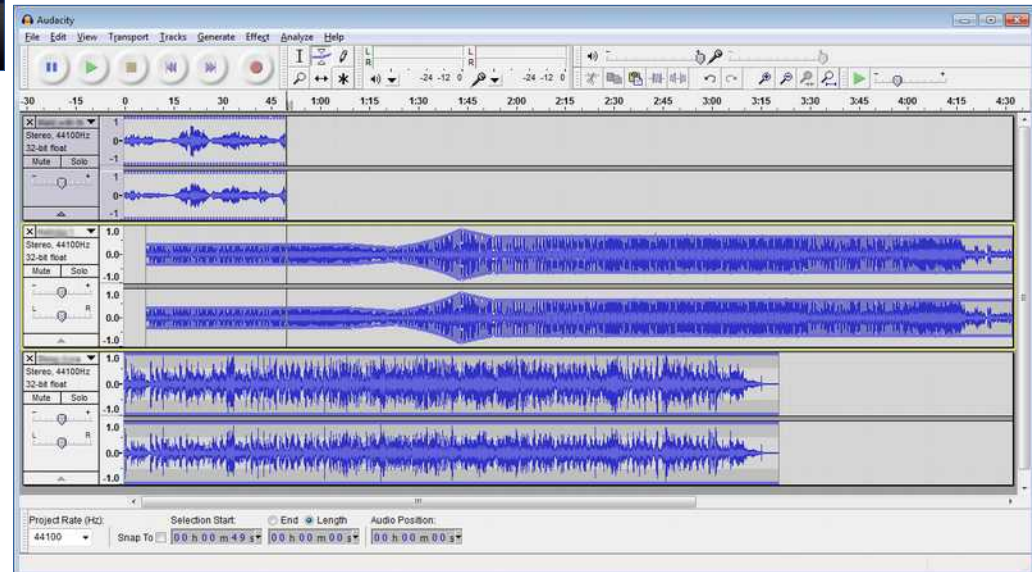
Blender e FreeCAD



KiCAD e VLC



Kodi e Audacity

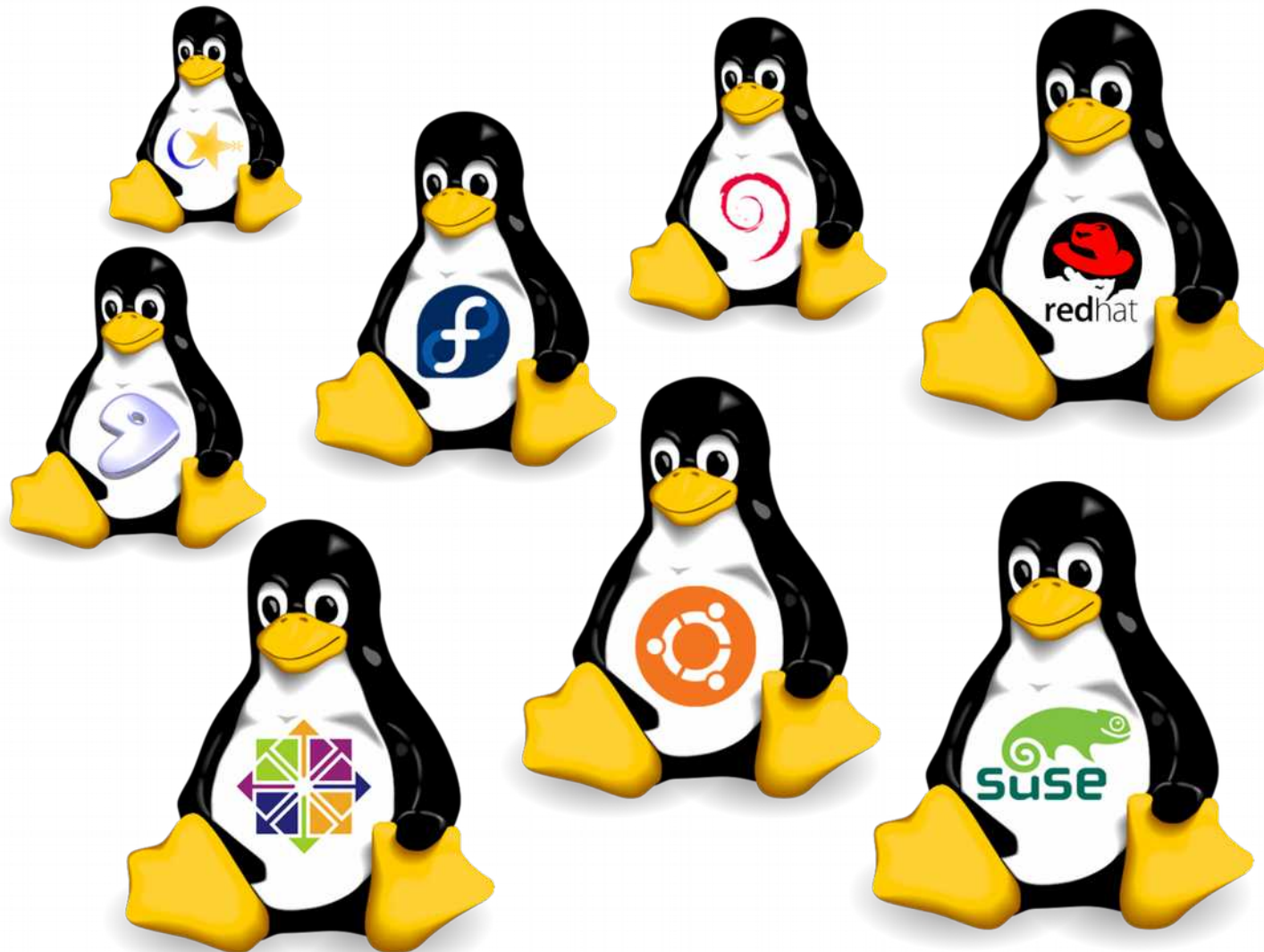


LibreOffice

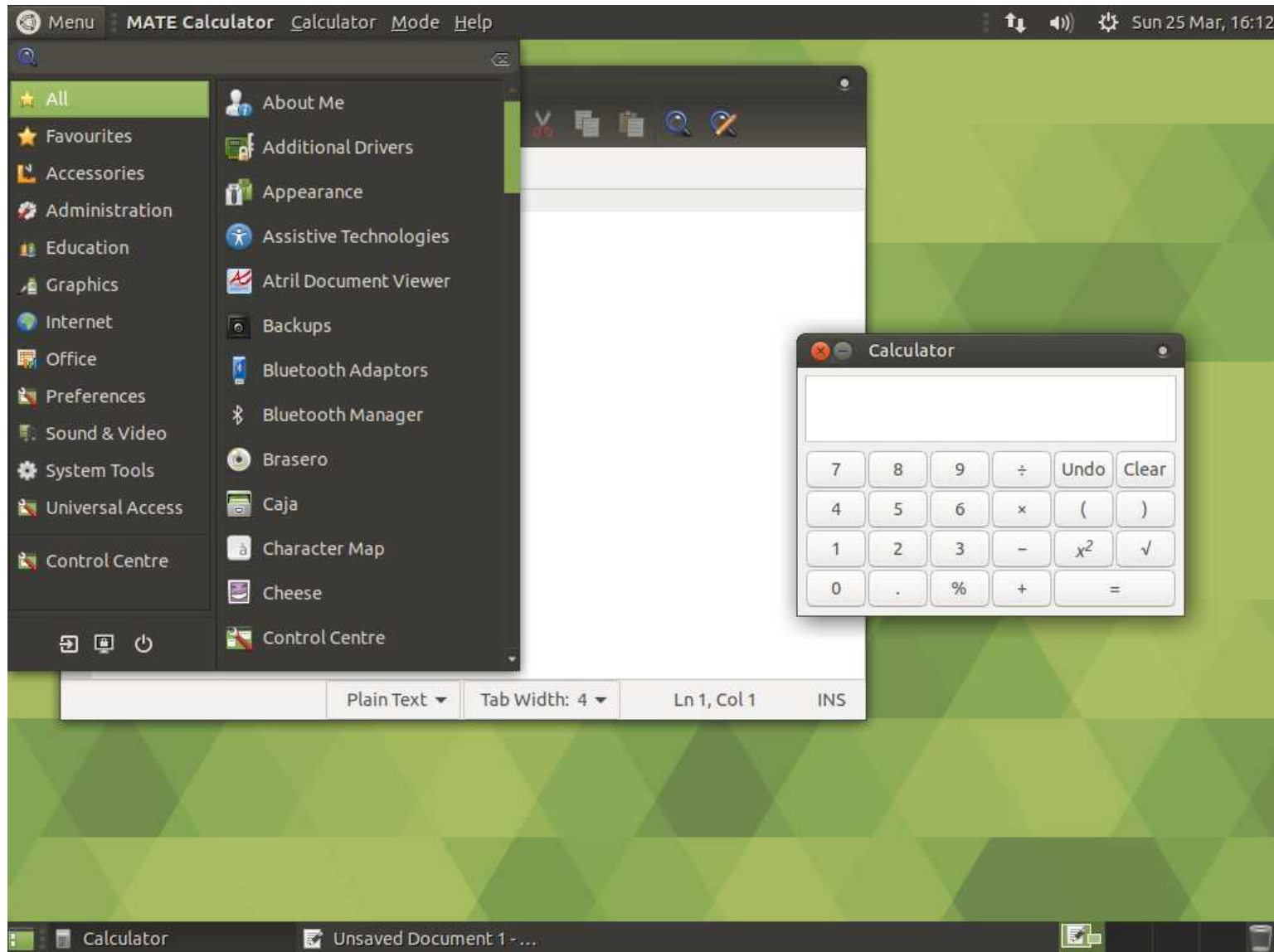


www.libreoffice.org

Distribuzioni



Distribuzioni - Desktop



Distribuzioni - Server

```
[root@localhost ~]# yum install ntp
Loaded plugins: fastestmirror
Loading mirror speeds from cached hostfile
 * base: mirror.rockwell.com
 * epel: mirror.sco.net
 * extras: mirror.rockwell.com
 * updates: centos.mirror.com
Resolving Dependencies
--> Running transaction check
--> Package ntp.x86_64 0:4.2.6p5-18.el7.centos will be installed
--> Finished Dependency Resolution

Dependencies Resolved

=====
Package                Arch                Version                Repository
=====
Installing:
ntp                    x86_64              4.2.6p5-18.el7.centos base

Transaction Summary
=====
Install 1 Package

Total download size: 539 k
Installed size: 1.4 M
Is this ok [y/d/N]: y
Downloading packages:
ntp-4.2.6p5-18.el7.centos.x86_64.rpm | 539
Running transaction check
Running transaction test
Transaction test succeeded
Running transaction
  Installing : ntp-4.2.6p5-18.el7.centos.x86_64
  Verifying  : ntp-4.2.6p5-18.el7.centos.x86_64

Installed:
ntp.x86_64 0:4.2.6p5-18.el7.centos

Complete!
[root@localhost ~]# chkconfig ntpd on
Note: Forwarding request to 'systemctl enable ntpd.service'.
ln -s '/usr/lib/systemd/system/ntp.service' '/etc/systemd/system/multi-user.target.wants/ntp.service'
```

Distribuzioni - Desktop

```
GNU nano 3.1 dnd/chrono-inv
Chrono - Inventory
-----
## Weapons Armed ##
-----
Master Works Rapier
DMG: 1D6 + 2
ATKBNS: +7(5)
CRIT: 18/20 x 2
Range: Melee

Spell Attack
ATKBNS: 5
CRIT: x 2

Longbow
DMG: 1D8
ATKBNS: +7
CRIT: x 3
RNG: 100FT

GNU nano 3.1 dnd/chrono-spells
Chrono - Known Spells
-----
## Burning Hands ##
-----
Range: 15ft
Area: Cone-shaped burst

## Corrosive Touch ##
-----
Range: Touch

## Chill Touch ##
-----
Range: Touch
Saving Throw: Fortitude Partial or
Will negates

## Shield ##

GNU nano 3.1 dnd/chrono-notes
## 10.17.18 ##
[evshaddock@hackpad ~]$ scrotsync

Day 1:
Spell List:
0th Level Spells:
- Acid Splash
- Open / Close
- Detect Magic
- Ray of Frost

1st Level Spells:
- Grease
- Feather Fall
- Expeditious Retreat
- Shield
- Burning Hands

Woke up in My Hole. The skull screamed at me, and I screamed back until it$
I start my day by translating the evil devil book that gave me the ability $
a bit of a laugh. Some progress was made, but not much. Went to sleep after$

Day 2:
Spell List:
- Same as previous

The fucking skull is turning into my alarm clock. Yelled obscenities until $
god damned nerves. after I dealt with that, I head up to the tavern and hea$
creatures, going and stealing tools from the rebuilding effort. I cannot le$
one inconveniences local orphanages except for me. I hope they're goblins. $
silver bell to one of the workers tools with their blessing, and approached$
myself to stake out in his building. After setting this up, I went out to t$
few of my old friends. It appears they are after the same thing I am, and w$
stake-out place. Two of us stayed up throughout the night, and despite watc$
grabbed the entire chest of tools out from under us. I tried to cast Detect$
trail of my bell, but the sense is very weak, though fortunately a wizard t$
able to help me with my efforts, and the trail is strengthened just enough $

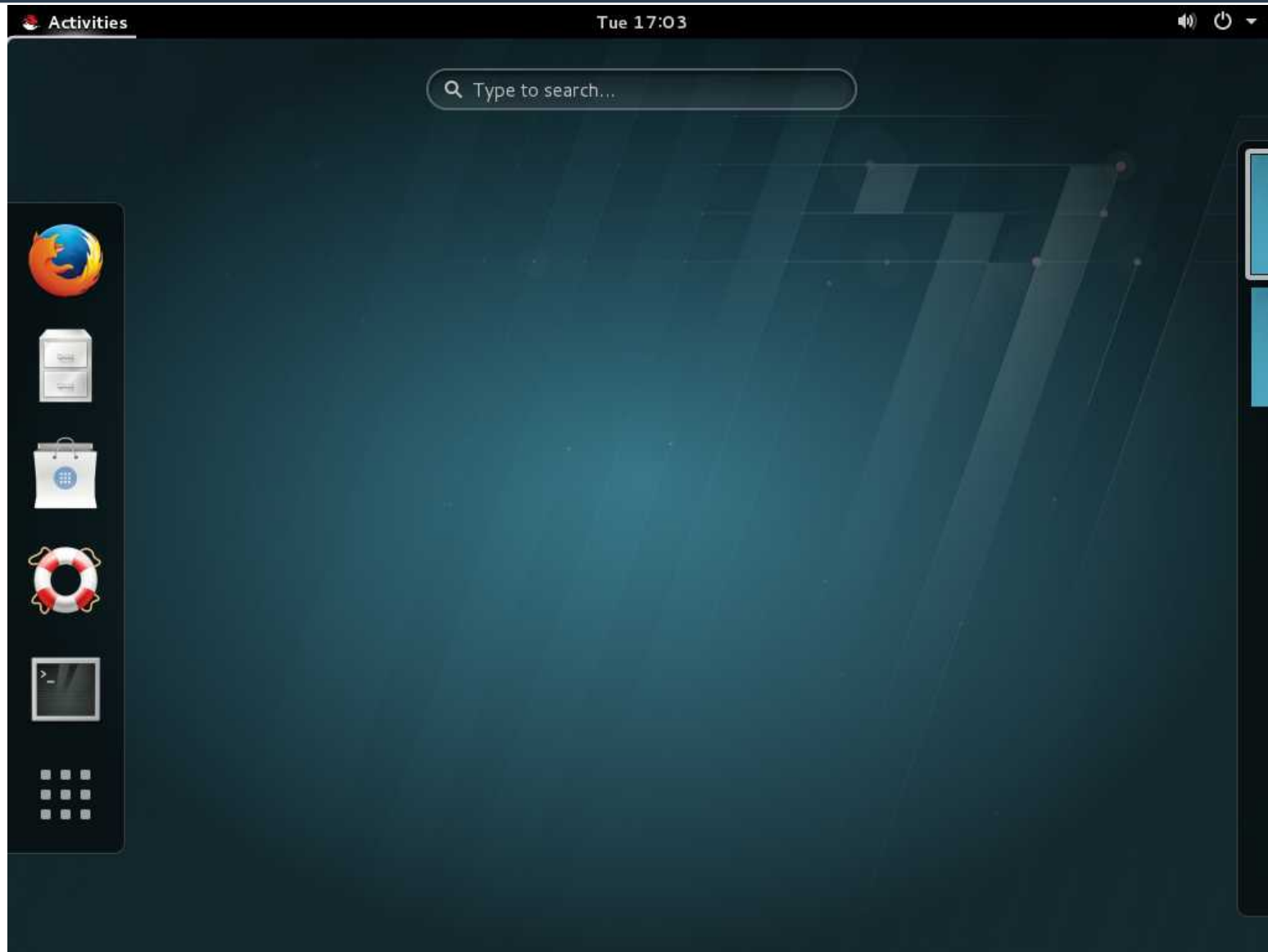
The magical trail made by my bell leads down a drainage ditch, and we foll$
door in the side of the sewer wall. Legorn takes the lead, and enters the d$

AG Get Help   AO Write Out  AW Where Is   AK Cut Text   AJ Justify
AX Exit       AR Read File  AA Replace    AU Uncut Text AT To Spell

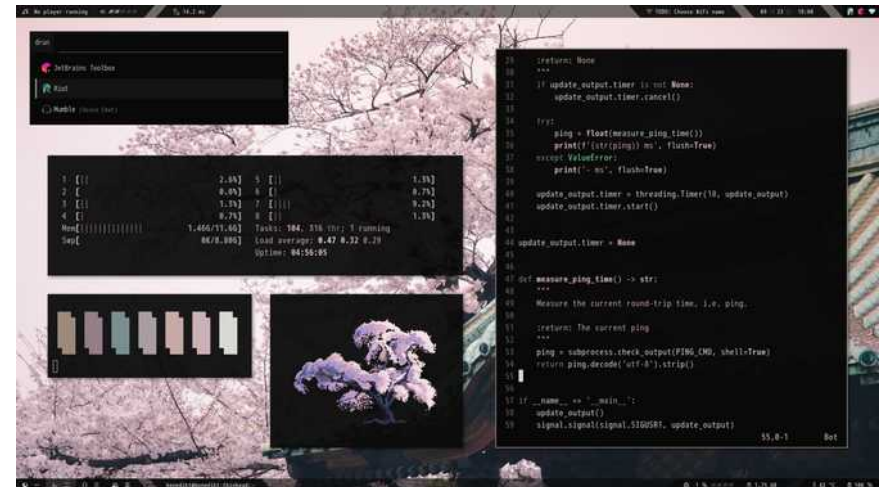
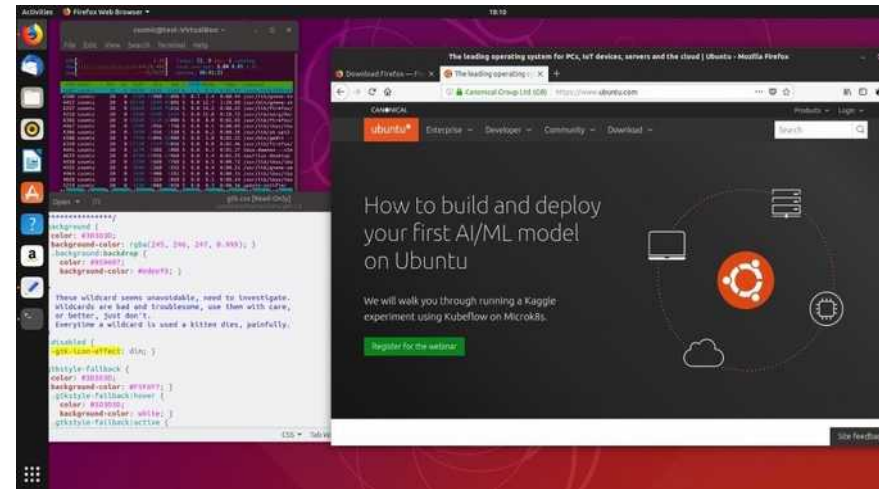
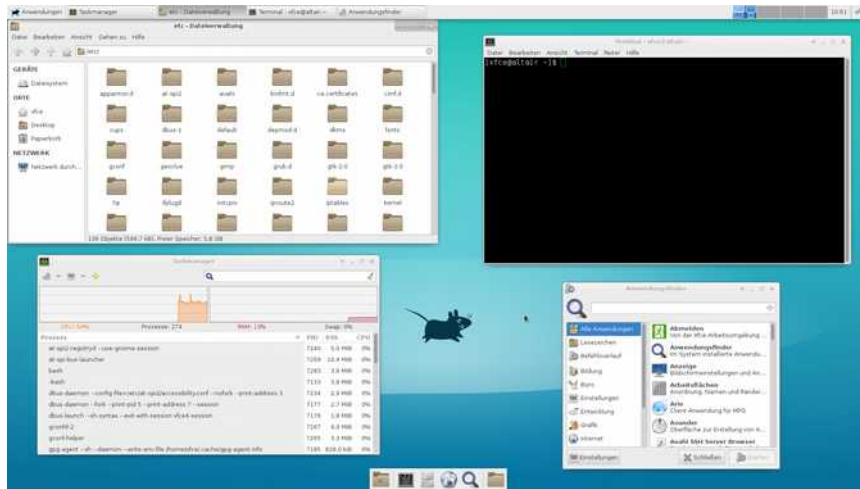
1 2 3
cpu: 65% | 23.8 GiB | no lan | No battery | 18.10. 19:18
```



Distribuzioni - Server



Desktop environment e Window Manager



Proviamo qualche Distro



LibreSchool (progetto OS)



Perché GNU/Linux nella scuola?

- no *vendor lock-in* (libertà)
- legalità
- obsolescenza hardware
- costi indotti (AV, HW)
- prestazioni
- spese su famiglie

Linux nelle aziende?



Installiamo un Server Linux



Linux nelle aziende – Server Web



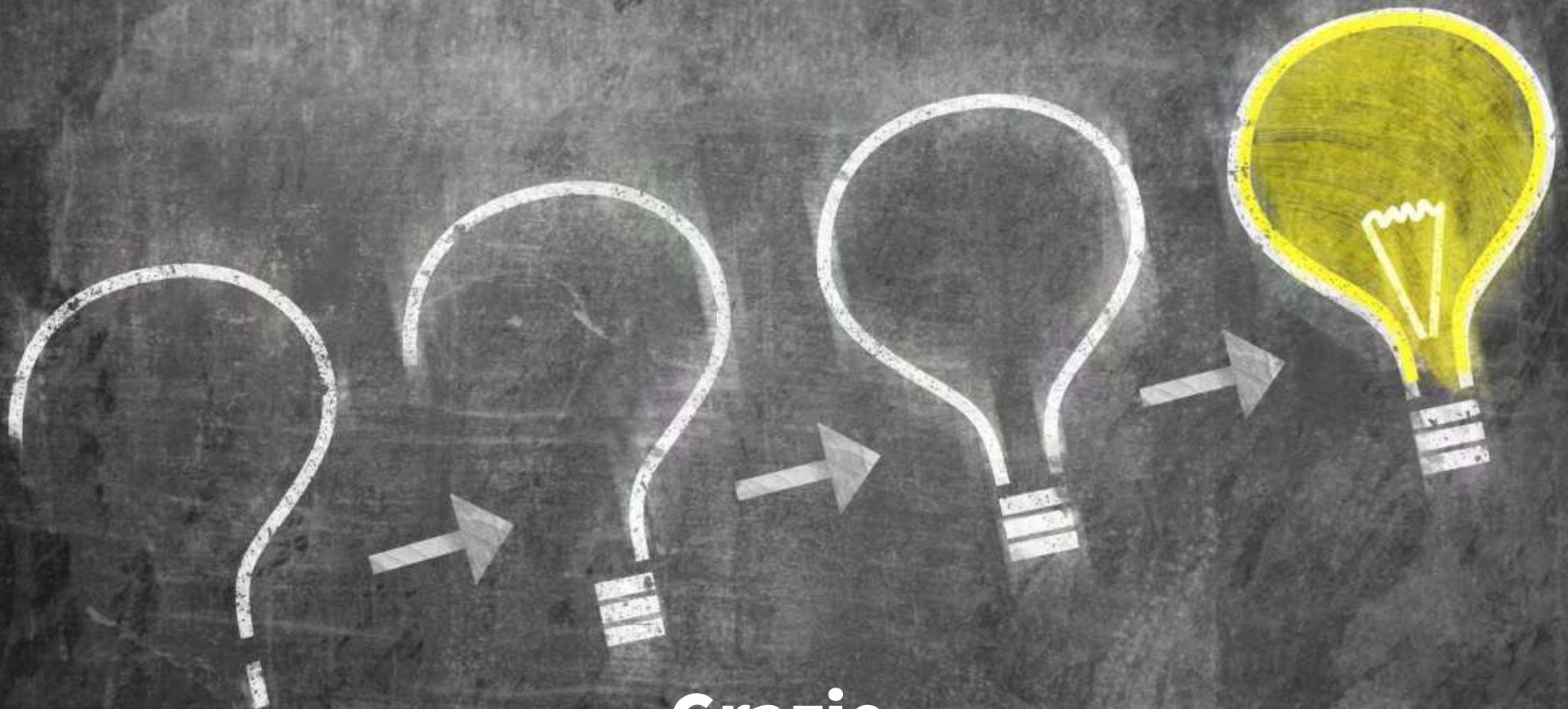
NGINX

Includes
MySQL®



Linux Nginx Php Mysql





Grazie

